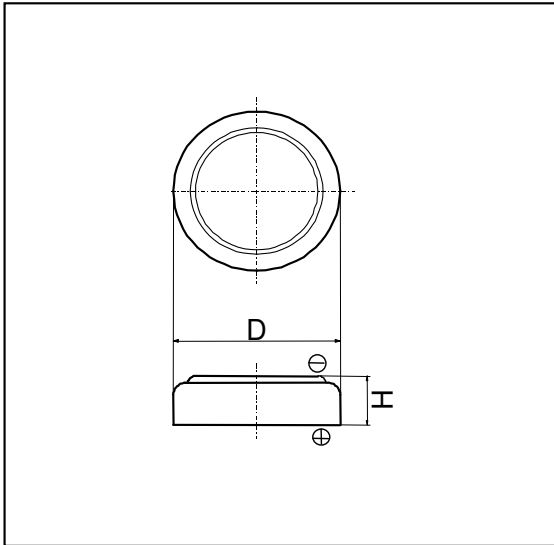


Cell Type ML621 Specifications



Nominal Capacity ^{*1}		5.8mAh
Nominal Voltage		3.0V
Standard Charge/Discharge Current		0.015mA
Max. Discharge Current	Continuous ^{*2}	0.5mA
	Pulse ^{*3}	1.5mA
Charge/Discharge Cycle Characteristics	Discharging Depth of 5%	3000
	Discharging Depth of 20%	300
Charging Method	Constant Voltage Charge	3.1±0.15V
	High Temperature	2.95±0.15V
Temperature Range	-20°C-60°C	
Weight	0.22g	
Dimensions	Diameter(D)	6.8mm
	Height(H)	2.1mm

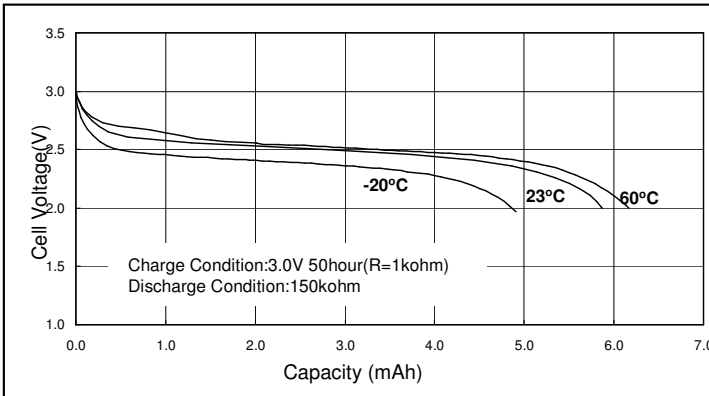
*1 Nominal capacity is determined to an end voltage of 2.0V when the battery is allowed to discharge at a standard current level at 23°C.

*2 Current value is determined so that 50% of the nominal capacity is obtained with an end voltage of 2.0V at 23 °C.

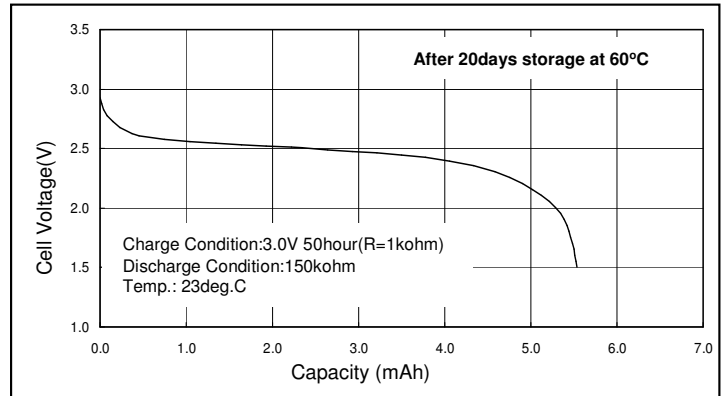
*3 Current value for obtaining 2.0V cell voltage when 15sec. pulse is applied at 50% discharge depth at 23 °C.

Typical Characteristics

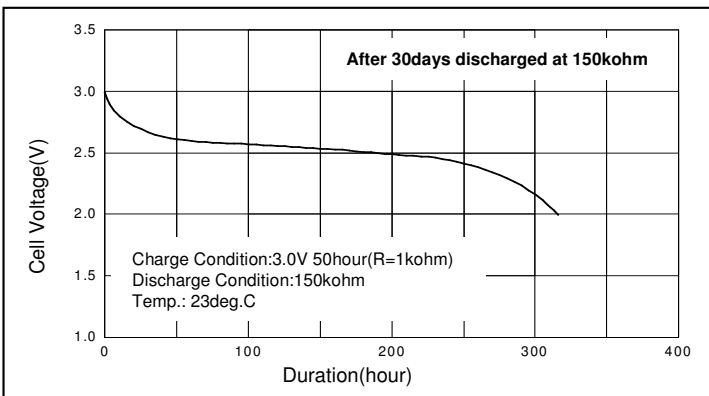
Temperature Characteristics of ML621



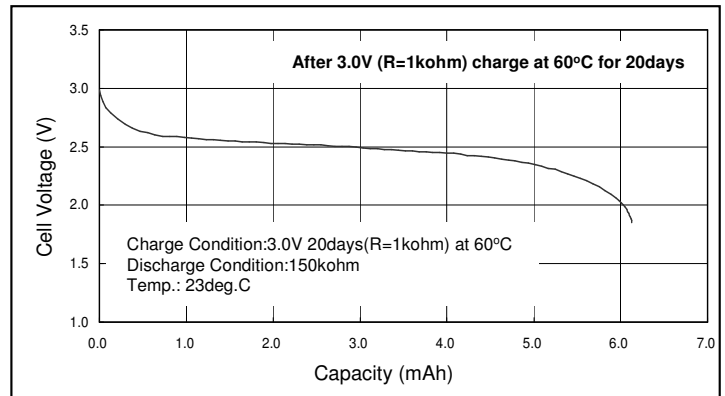
Discharge Characteristics after storage of ML621



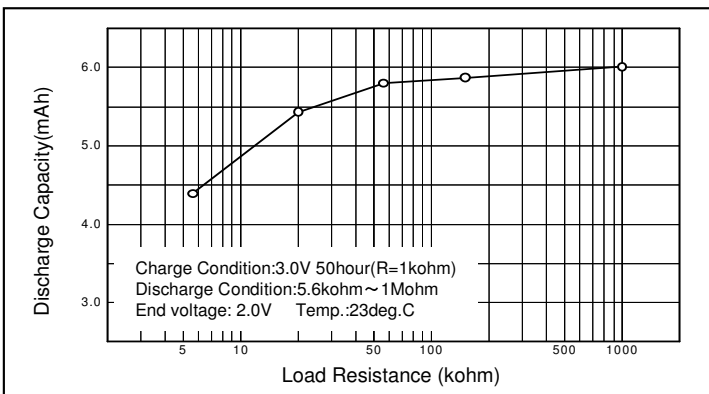
Discharge Characteristics after Over-Discharge of ML621



Continuous Charge Characteristics of ML621



Charge Characteristics of ML621



Charge/Discharge Cycle Characteristics of ML621

